

Pedestrian Routes

Trial Hole Number	CBR
TH11	-
TH12	-
TH17	-
TH18	-
TH20	0.4%
TH21	4%
TH22	-
TH23	-
TH24	16%

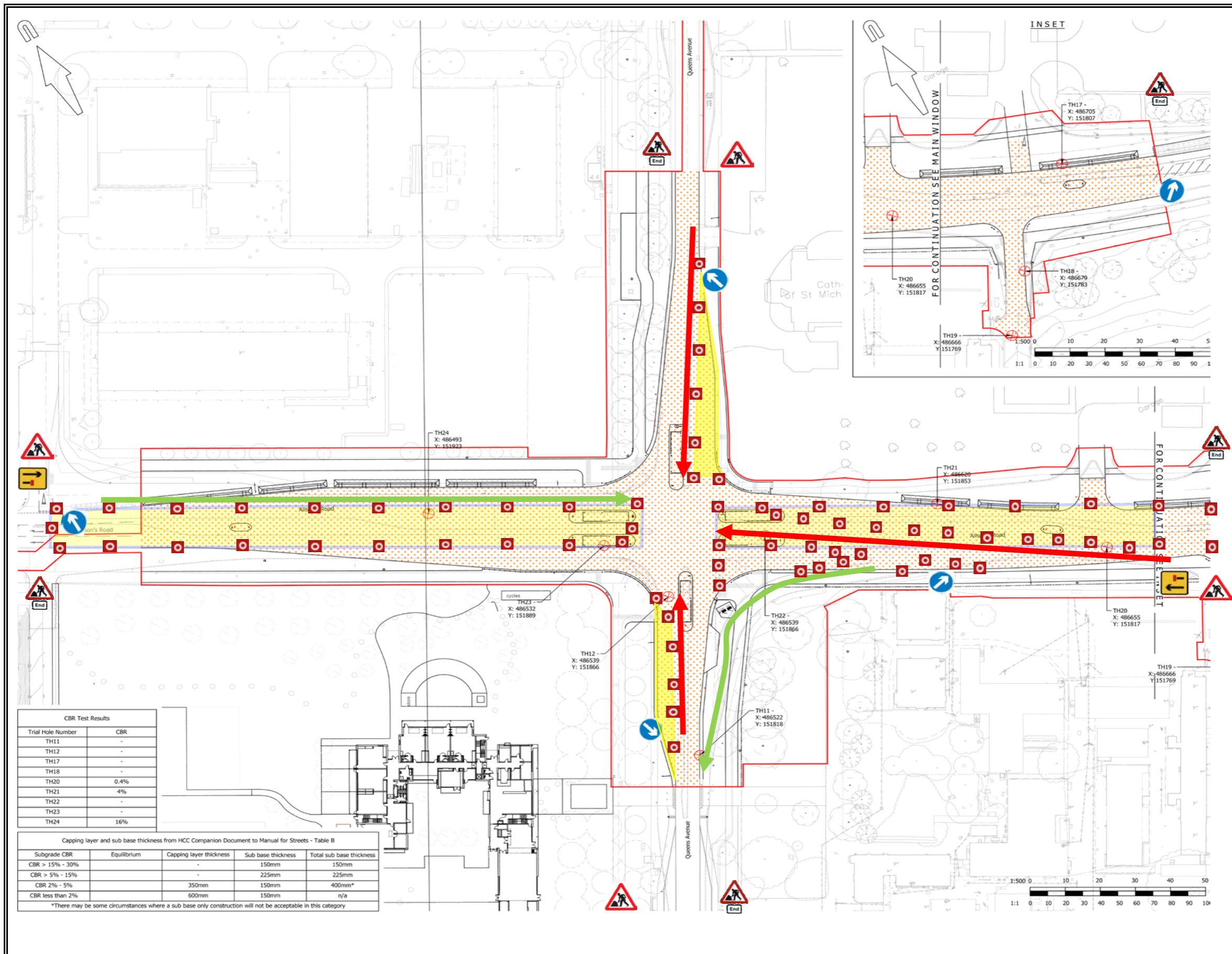
Subgrade CBR	Equilibrium	Capping layer thickness	Sub base thickness	Total sub base thickness
CBR > 15% - 30%	-	-	150mm	150mm
CBR > 5% - 15%	-	-	225mm	225mm
CBR 2% - 5%	-	350mm	150mm	400mm*
CBR less than 2%	-	600mm	150mm	n/a

*There may be some circumstances where a sub base only construction will not be acceptable in this category

Title	Traffic Management Plans	Number	HC 01 Rev A
Project	Alisons Road/Queens Avenue Aldershot		
Works	Island Reconfiguration and Drainage		

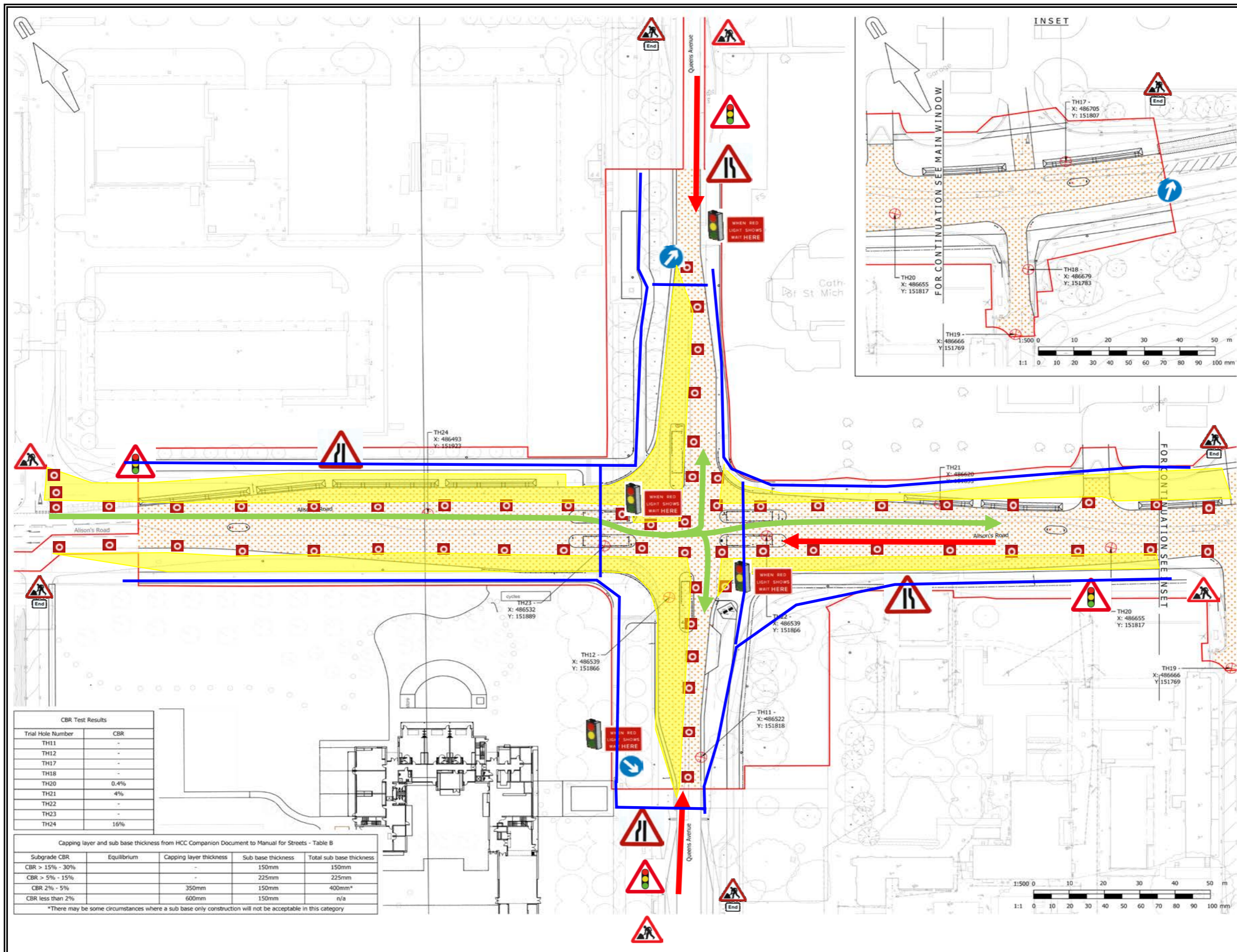
- 1) Cone Size : 750 mm
- 2) Sign Size : 750 mm
- 3) Signs To Be Reflectorisred
- 4) Steady Beacons To Be Used At Night
- 5) Cone Spacing 5m





Title	Traffic Management Plans	Number	HC 01.1
Project	Alisons Road/Queens Avenue Aldershot		
Works	Island Reconfiguration and Drainage		
1)	Cone Size : 750 mm		
2)	Sign Size : 750 mm		
3)	Signs To Be Reflectorisled		
4)	Steady Beacons To Be Used At Night		
5)	Cone Spacing 5m		





Trial Hole Number	CBR
TH11	-
TH12	-
TH17	-
TH18	-
TH20	0.4%
TH21	4%
TH22	-
TH23	-
TH24	16%

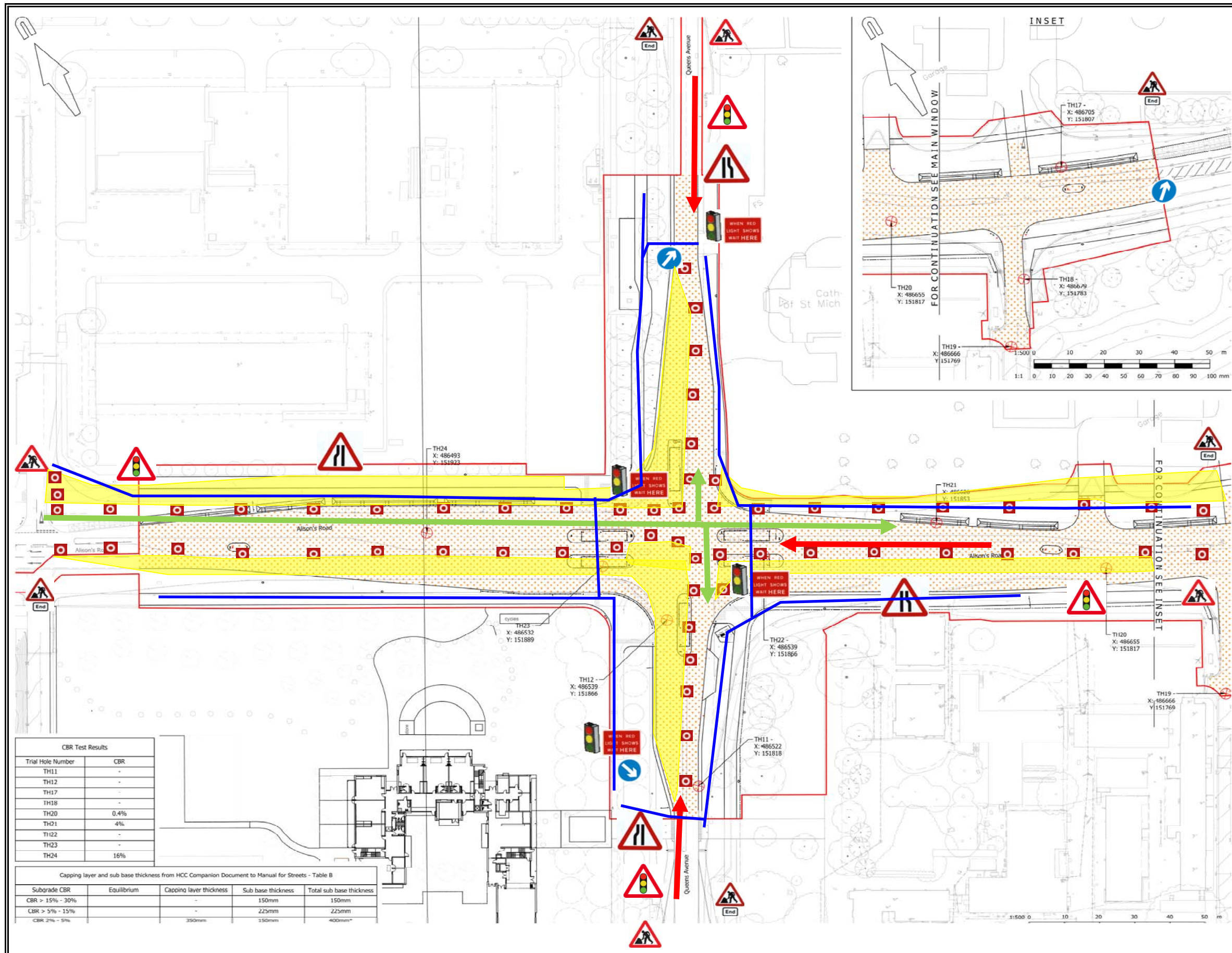
Subgrade CBR	Equilibrium	Capping layer thickness	Sub base thickness	Total sub base thickness
CBR > 15% - 30%	-	-	150mm	150mm
CBR > 5% - 15%	-	-	225mm	225mm
CBR 2% - 5%	-	350mm	150mm	400mm*
CBR less than 2%	-	600mm	150mm	n/a

*There may be some circumstances where a sub base only construction will not be acceptable in this category

Title	Traffic Management Plans	Number	HC 02
Project	Alisons Road/Queens Avenue Aldershot		
Works	Kerb Line Changes, Drainage and Services		

- 1) Cone Size : 750 mm
- 2) Sign Size : 750 mm
- 3) Signs To Be Reflectorisied
- 4) Steady Beacons To Be Used At Night
- 5) Cone Spacing 5m





CBR Test Results

Trial Hole Number	CBR
TH11	-
TH12	-
TH17	-
TH18	-
TH20	0.4%
TH21	4%
TH22	-
TH23	-
TH24	16%

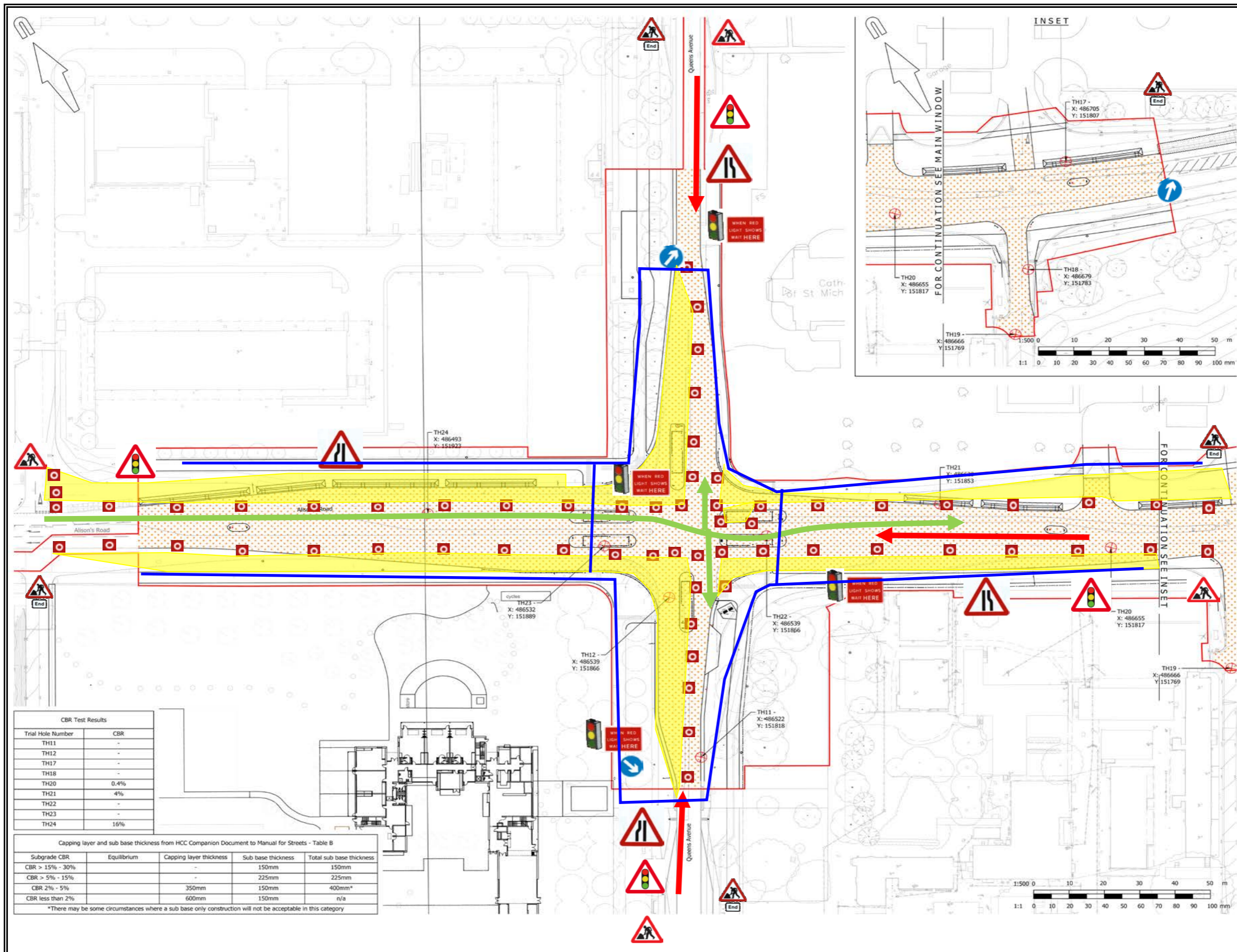
Capping layer and sub base thickness from HCC Companion Document to Manual for Streets - Table B

Subgrade CBR	Equilibrium	Capping layer thickness	Sub base thickness	Total sub base thickness
CBR > 15% - 30%	-	150mm	150mm	150mm
CBR > 5% - 15%	-	225mm	225mm	225mm
CBR 2% - 5%	-	350mm	350mm	400mm

Title	Traffic Management Plans	Number	HC 03
Project	Alisons Road/Queens Avenue Aldershot		
Works	Kerb Line Changes, Drainage and Services		

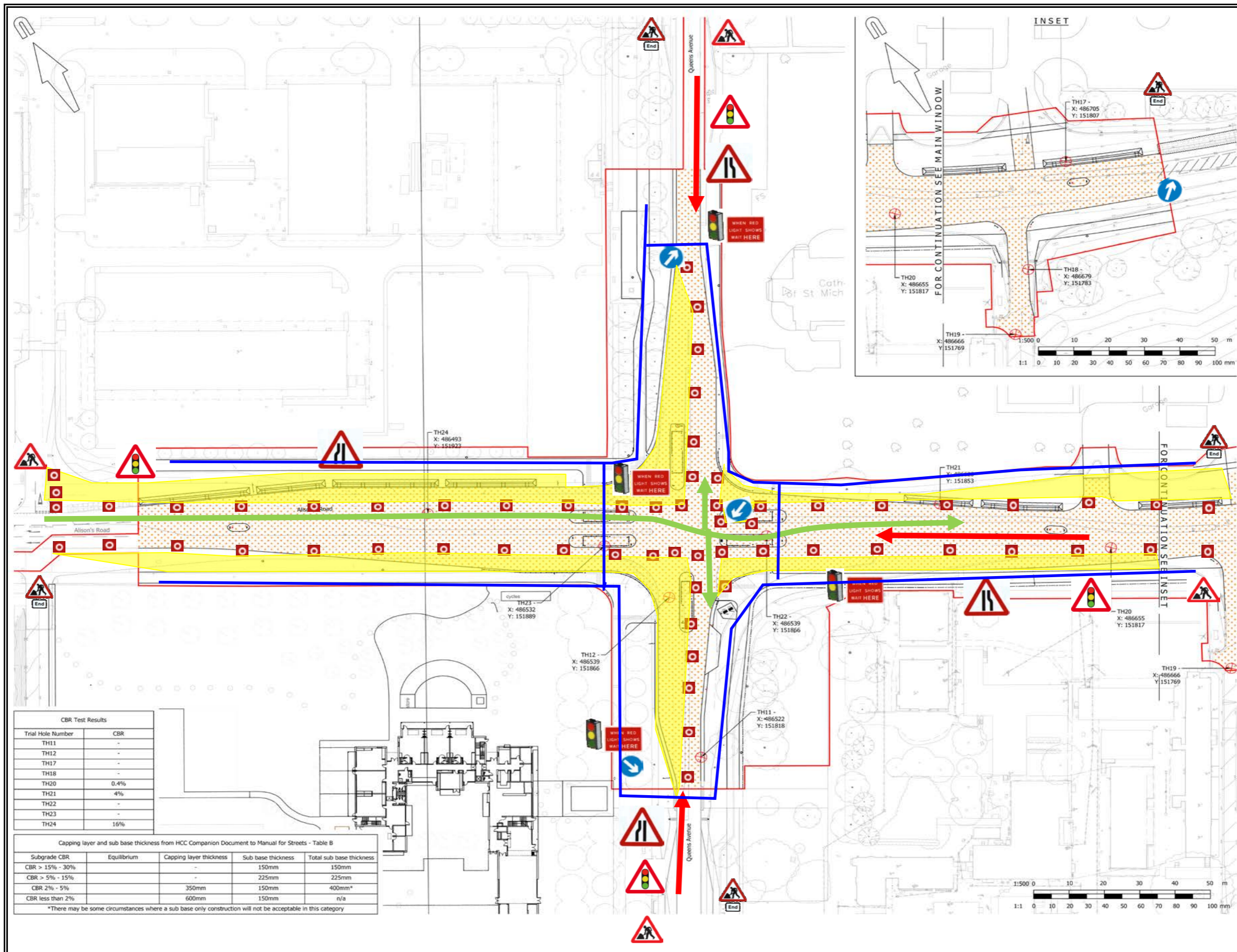
- 1) Cone Size : 750 mm
- 2) Sign Size : 750 mm
- 3) Signs To Be Reflectorisred
- 4) Steady Beacons To Be Used At Night
- 5) Cone Spacing 5m





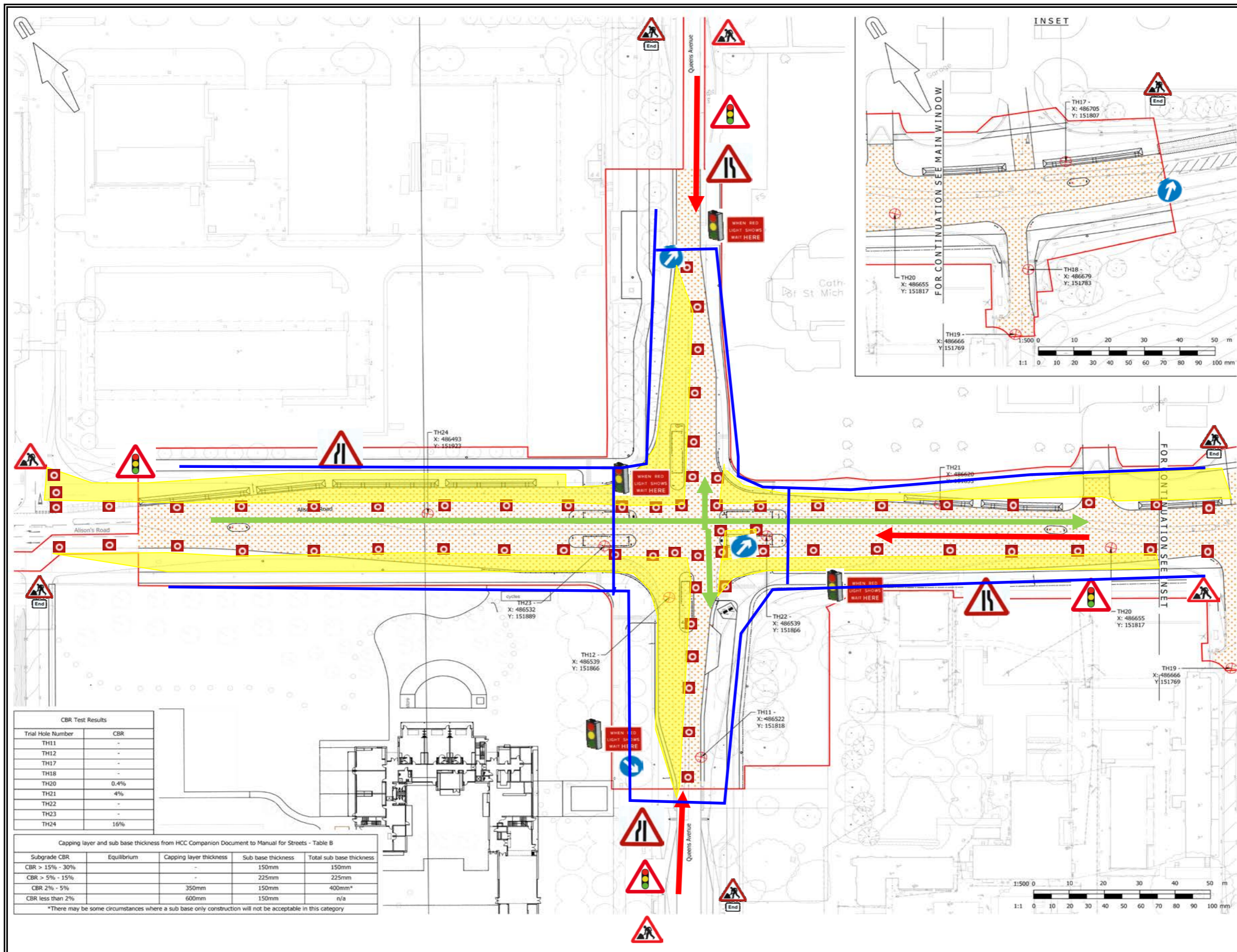
Title	Traffic Management Plans	Number	HC 04
Project	Alisons Road/Queens Avenue Aldershot		
Works	Kerb Line Changes, Drainage and Services		
1)	Cone Size : 750 mm		
2)	Sign Size : 750 mm		
3)	Signs To Be Reflectorisied		
4)	Steady Beacons To Be Used At Night		
5)	Cone Spacing 5m		





Title	Traffic Management Plans	Number	HC 05
Project	Alisons Road/Queens Avenue Aldershot		
Works	Kerb Line Changes, Drainage and Services		
1)	Cone Size : 750 mm		
2)	Sign Size : 750 mm		
3)	Signs To Be Reflectorisied		
4)	Steady Beacons To Be Used At Night		
5)	Cone Spacing 5m		





Trial Hole Number	CBR
TH11	-
TH12	-
TH17	-
TH18	-
TH20	0.4%
TH21	4%
TH22	-
TH23	-
TH24	16%

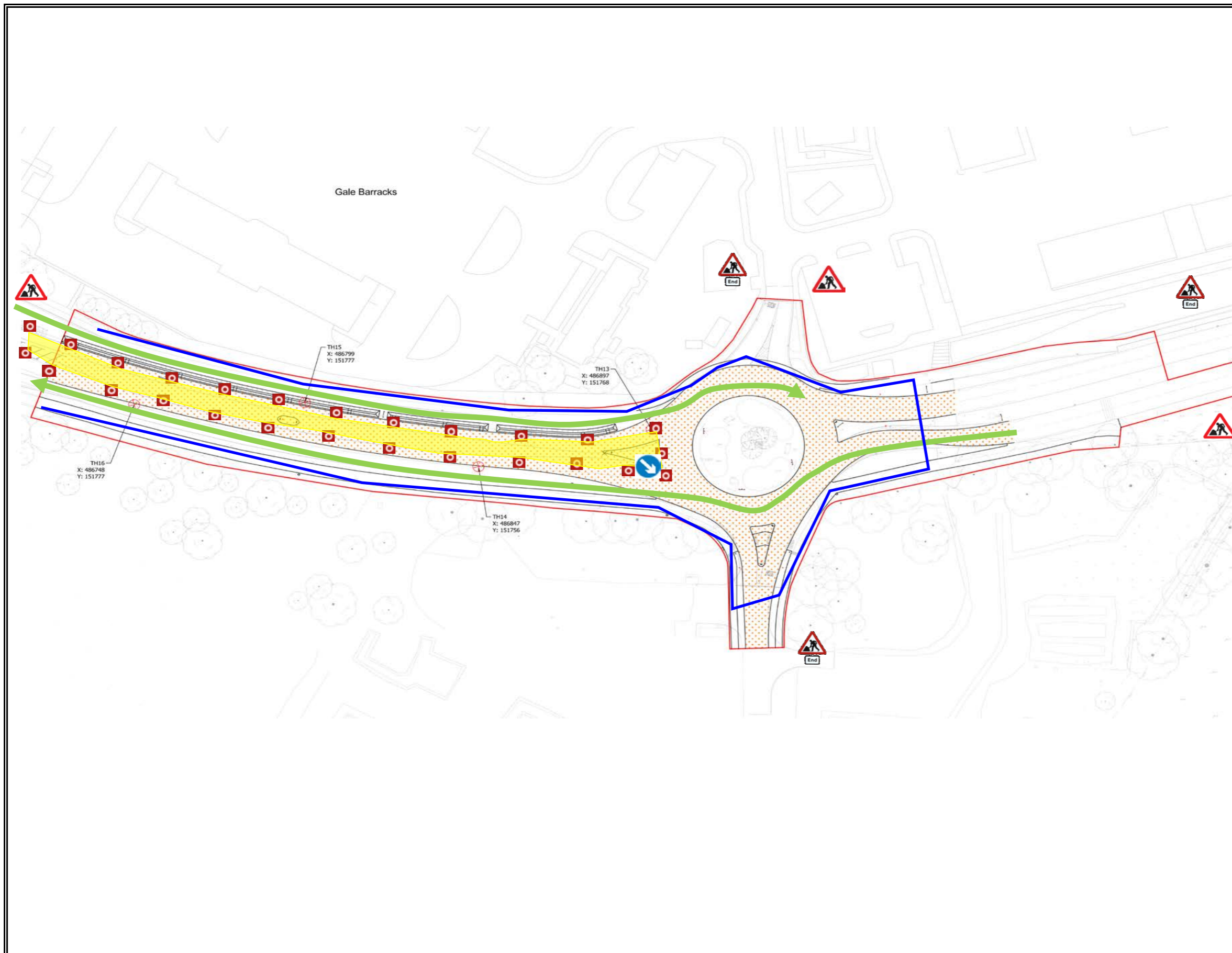
Subgrade CBR	Equilibrium	Capping layer thickness	Sub base thickness	Total sub base thickness
CBR > 15% - 30%	-	-	150mm	150mm
CBR > 5% - 15%	-	-	225mm	225mm
CBR 2% - 5%	-	350mm	150mm	400mm*
CBR less than 2%	-	600mm	150mm	n/a

*There may be some circumstances where a sub base only construction will not be acceptable in this category

Title	Traffic Management Plans	Number	HC 06
Project	Alisons Road/Queens Avenue Aldershot		
Works	Kerb Line Changes, Drainage and Services		

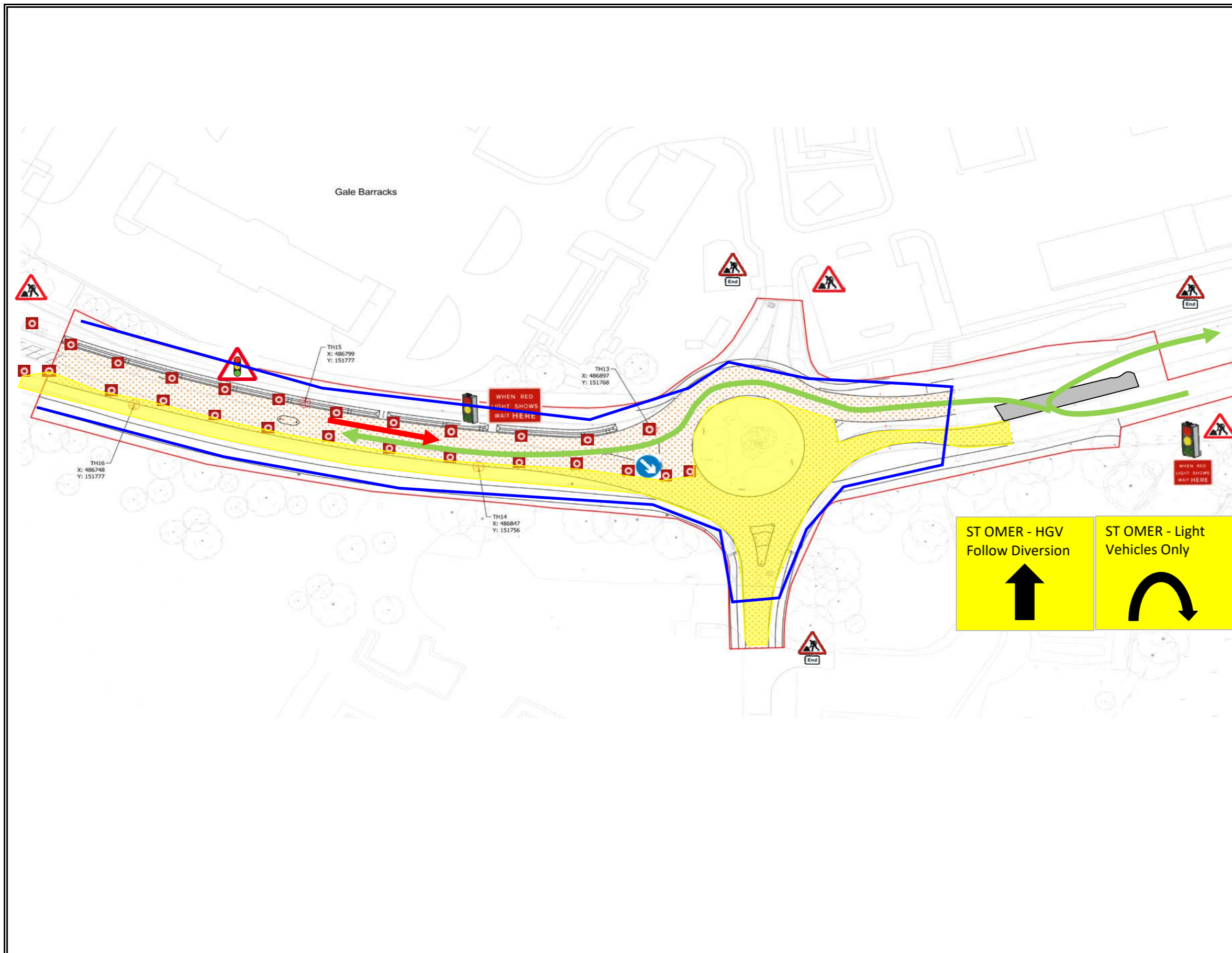
- 1) Cone Size : 750 mm
- 2) Sign Size : 750 mm
- 3) Signs To Be Reflectorisied
- 4) Steady Beacons To Be Used At Night
- 5) Cone Spacing 5m





Title	Traffic Management Plans	Number	HC 07
Project	Alisons Road Aldershot		
Works	Central Reservation		

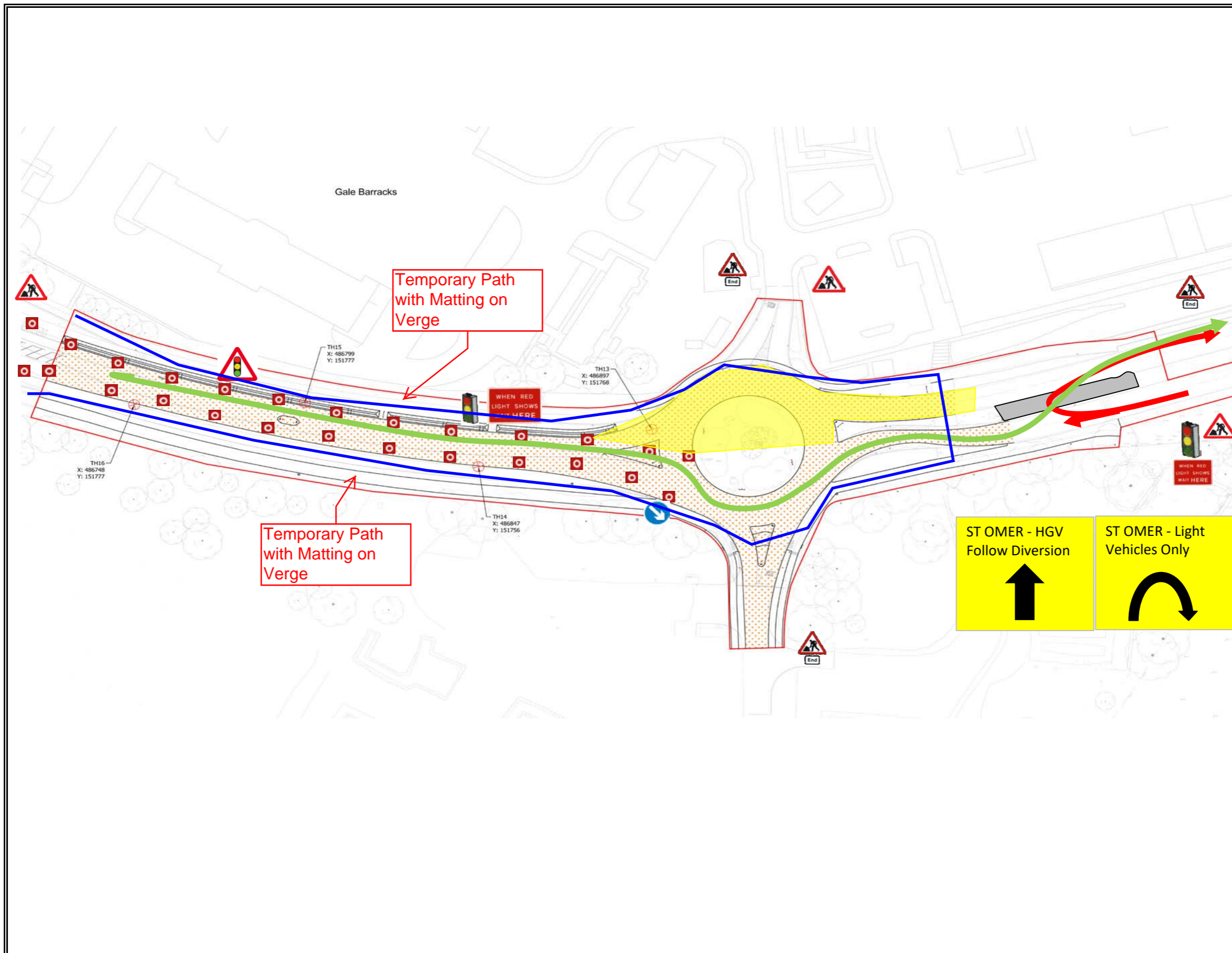
- 1) Cone Size : 750 mm
- 2) Sign Size : 750 mm
- 3) Signs To Be Reflectorised
- 4) Steady Beacons To Be Used At Night
- 5) Cone Spacing 5m



ST OMER - HGV Follow Diversion	ST OMER - Light Vehicles Only
↑	↪

Title	Traffic Management Plans	Number	HC 08
Project	Alisons Road Aldershot		
Works	Central Reservation		

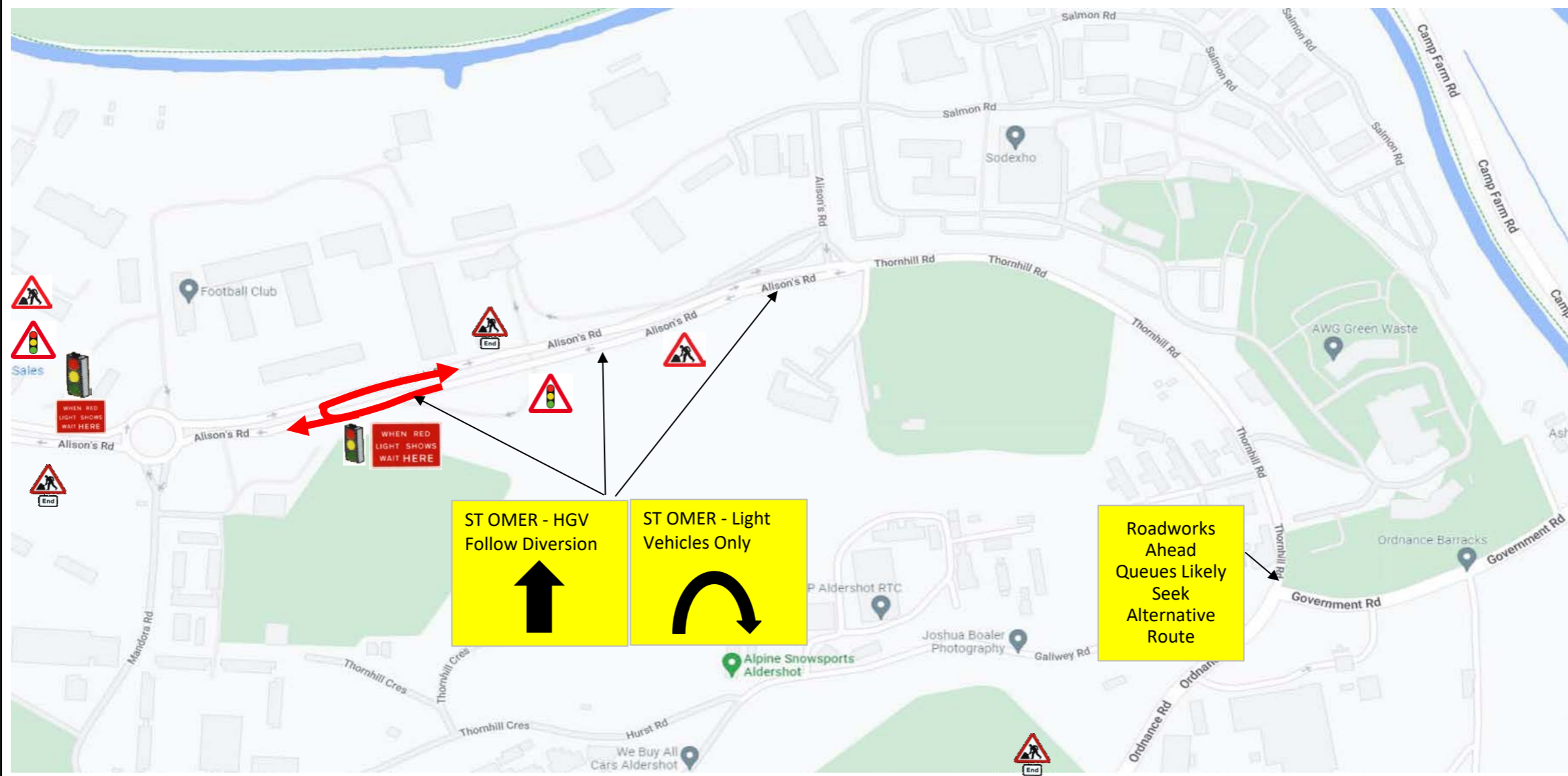
- 1) Cone Size : 750 mm
- 2) Sign Size : 750 mm
- 3) Signs To Be Reflectorised
- 4) Steady Beacons To Be Used At Night
- 5) Cone Spacing 5m



ST OMER - HGV Follow Diversion	ST OMER - Light Vehicles Only
↑	↻

Title	Traffic Management Plans	Number	HC 09
Project	Alisons Road Aldershot		
Works	Central Reservation		

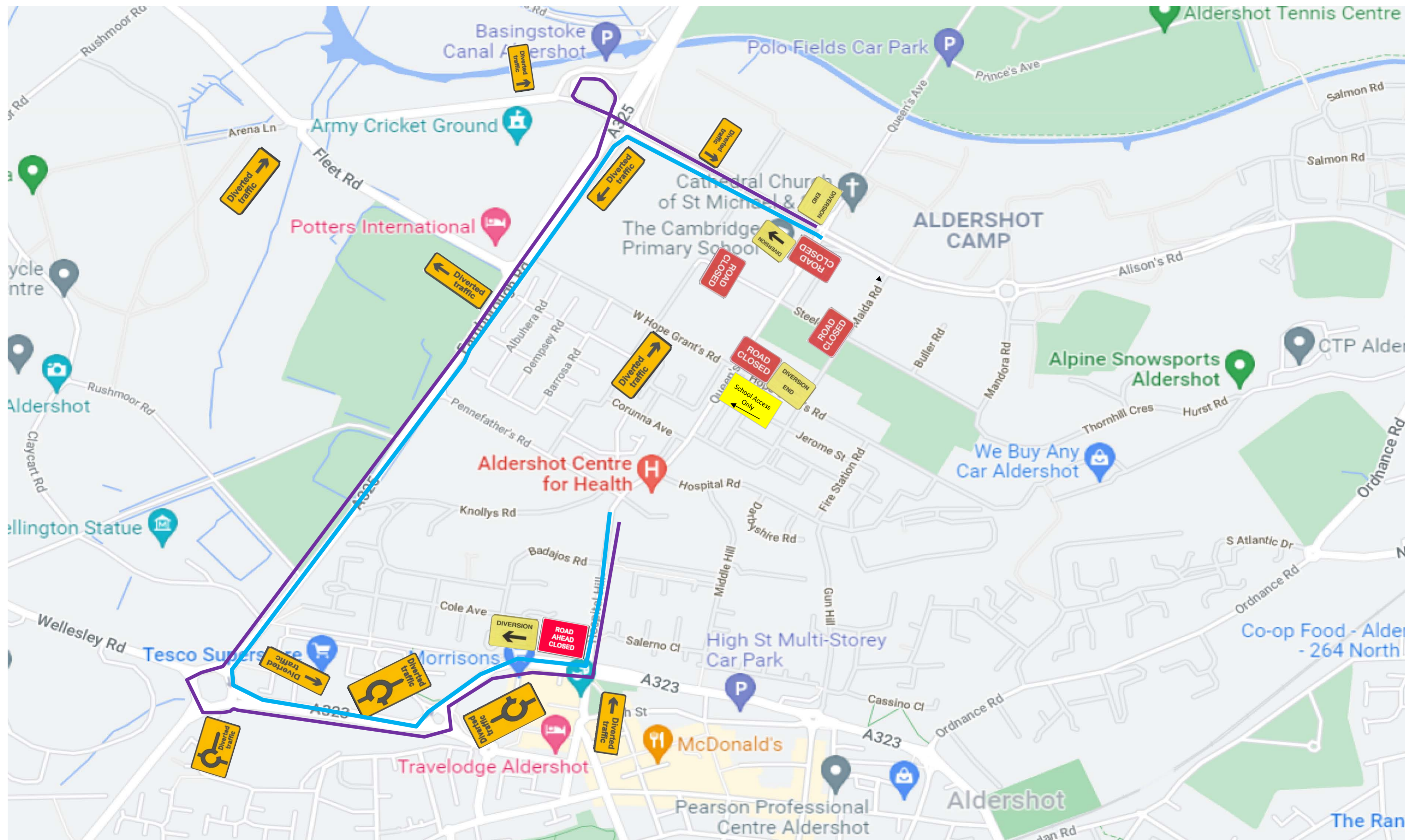
- 1) Cone Size : 750 mm
- 2) Sign Size : 750 mm
- 3) Signs To Be Reflectorised
- 4) Steady Beacons To Be Used At Night
- 5) Cone Spacing 5m



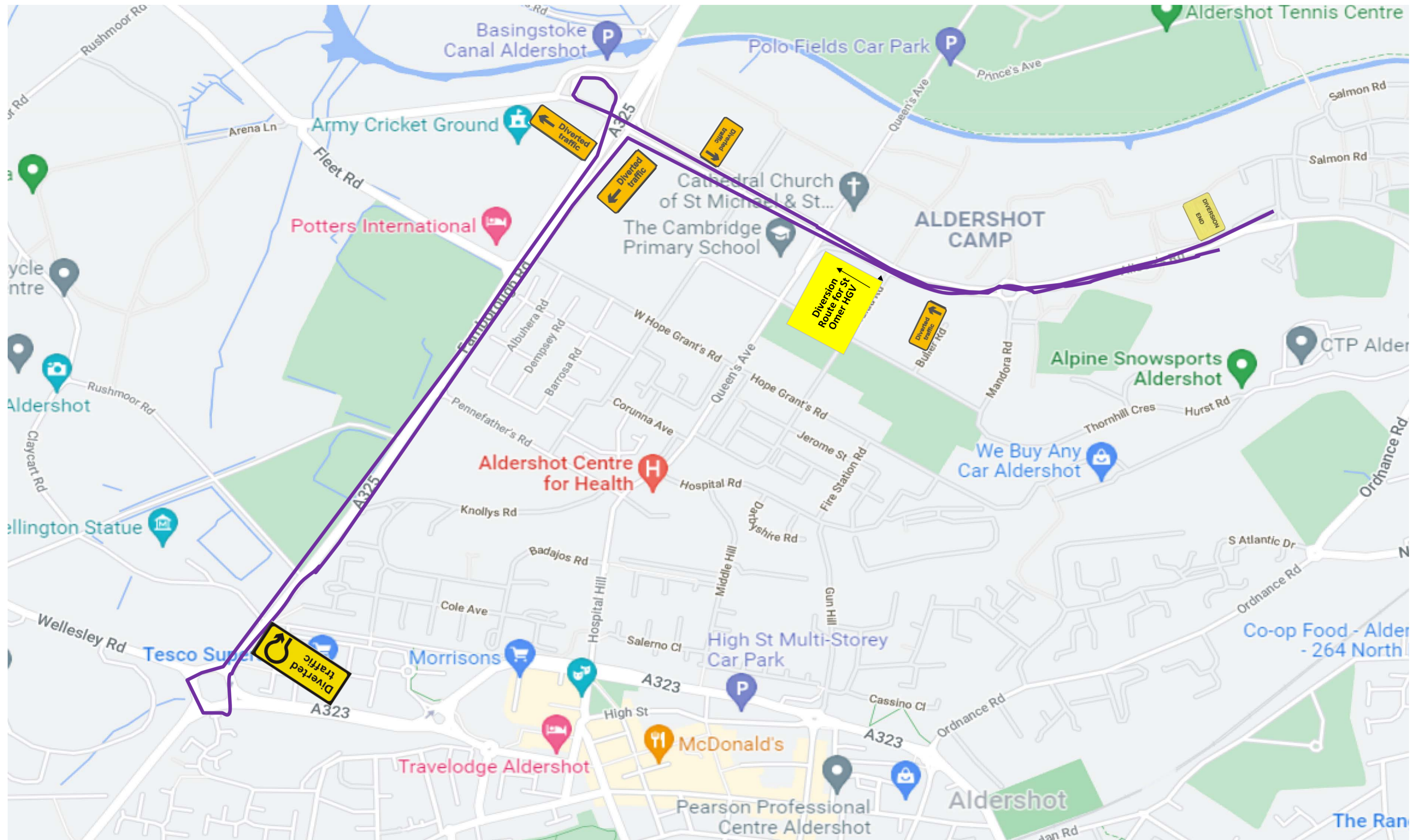
Title	Traffic Management Plans	Number	HC 10 Rev A
Project	Alisons Road Aldershot		
Works	Central Reservation		

- 1) Cone Size : 750 mm
- 2) Sign Size : 750 mm
- 3) Signs To Be Reflectorised
- 4) Steady Beacons To Be Used At Night
- 5) Cone Spacing 5m





Title	Traffic Management Plans		Number	HC 11 Rev A
Project	Queens Avenue - Paving Works Summer Holiday			
Works	Diversion Plan			
1)	Cone Size : 450 mm	2)	Sign Size : 750 mm	3) Signs To Be Reflectorised
4)	Steady Beacons To Be Used At Night	5)	Cone Spacing 5m	



Title	Traffic Management Plans		Number	HC12 Rev A
Project	St Omer HGV diversion alternative			
Works	Diversion Plan			
1)	Cone Size : 450 mm	2)	Sign Size : 750 mm	3) Signs To Be Reflectorised
4)	Steady Beacons To Be Used At Night	5)	Cone Spacing 5m	